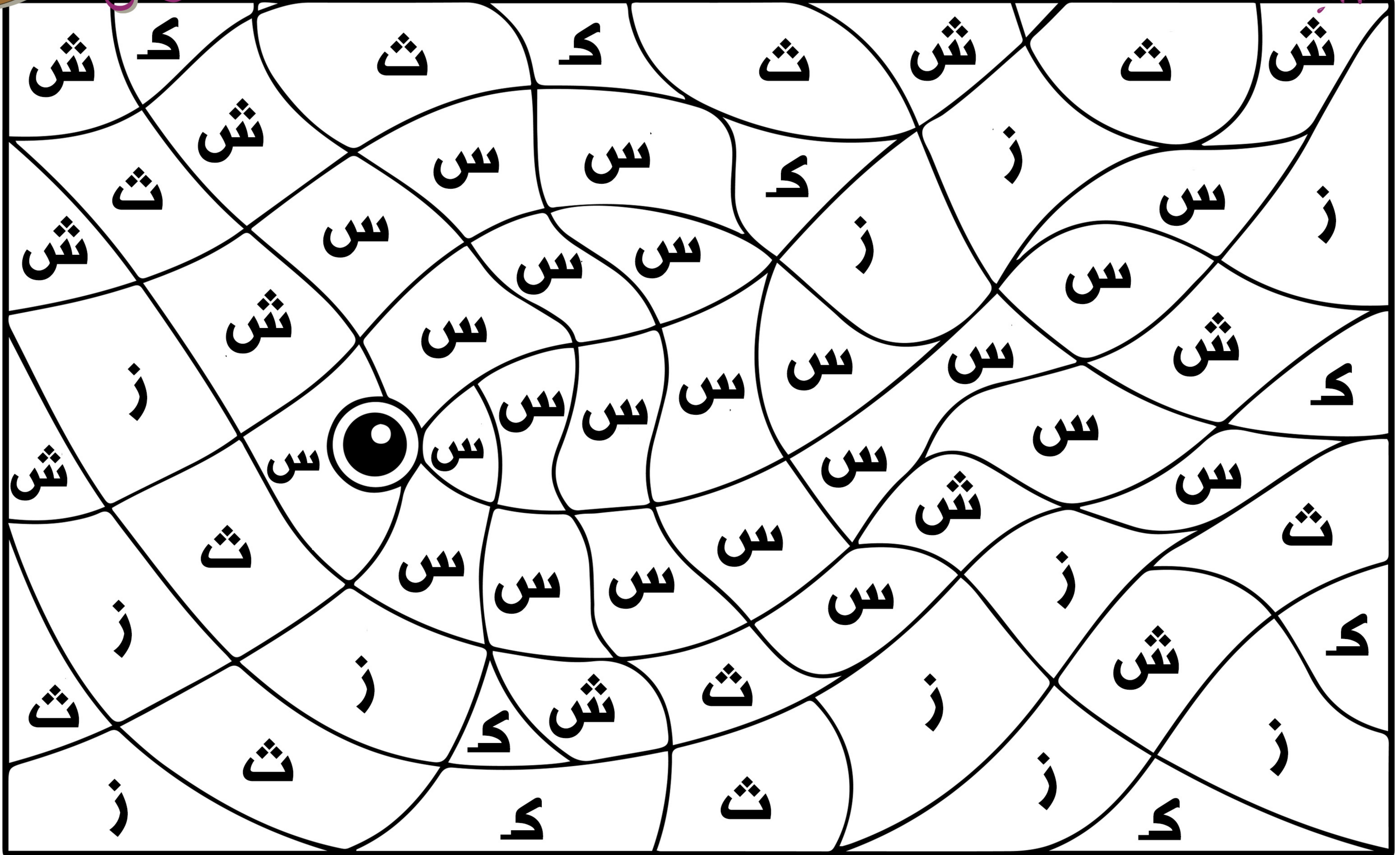




س

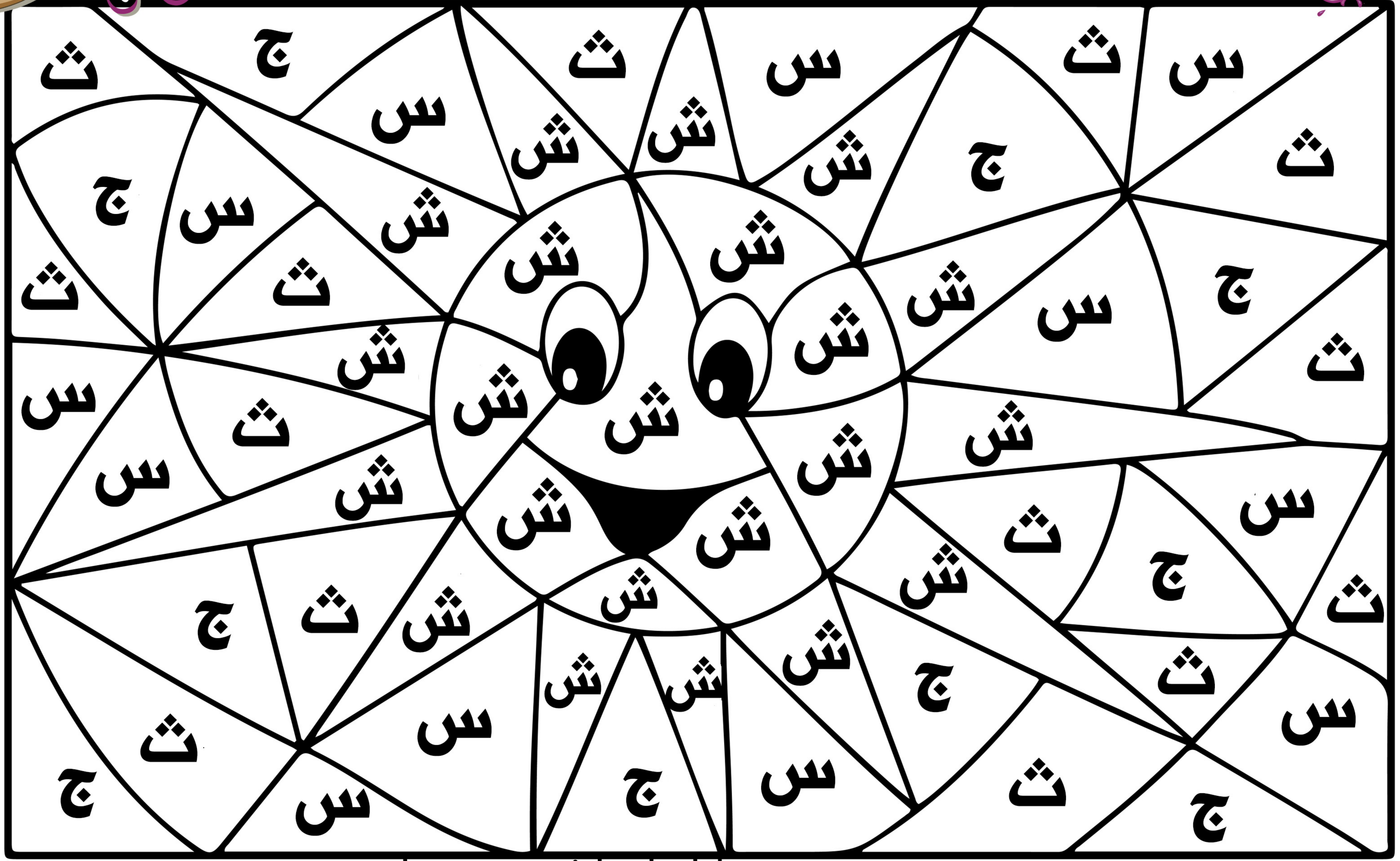
ألون حراف





رنگ

# انگ رنگ

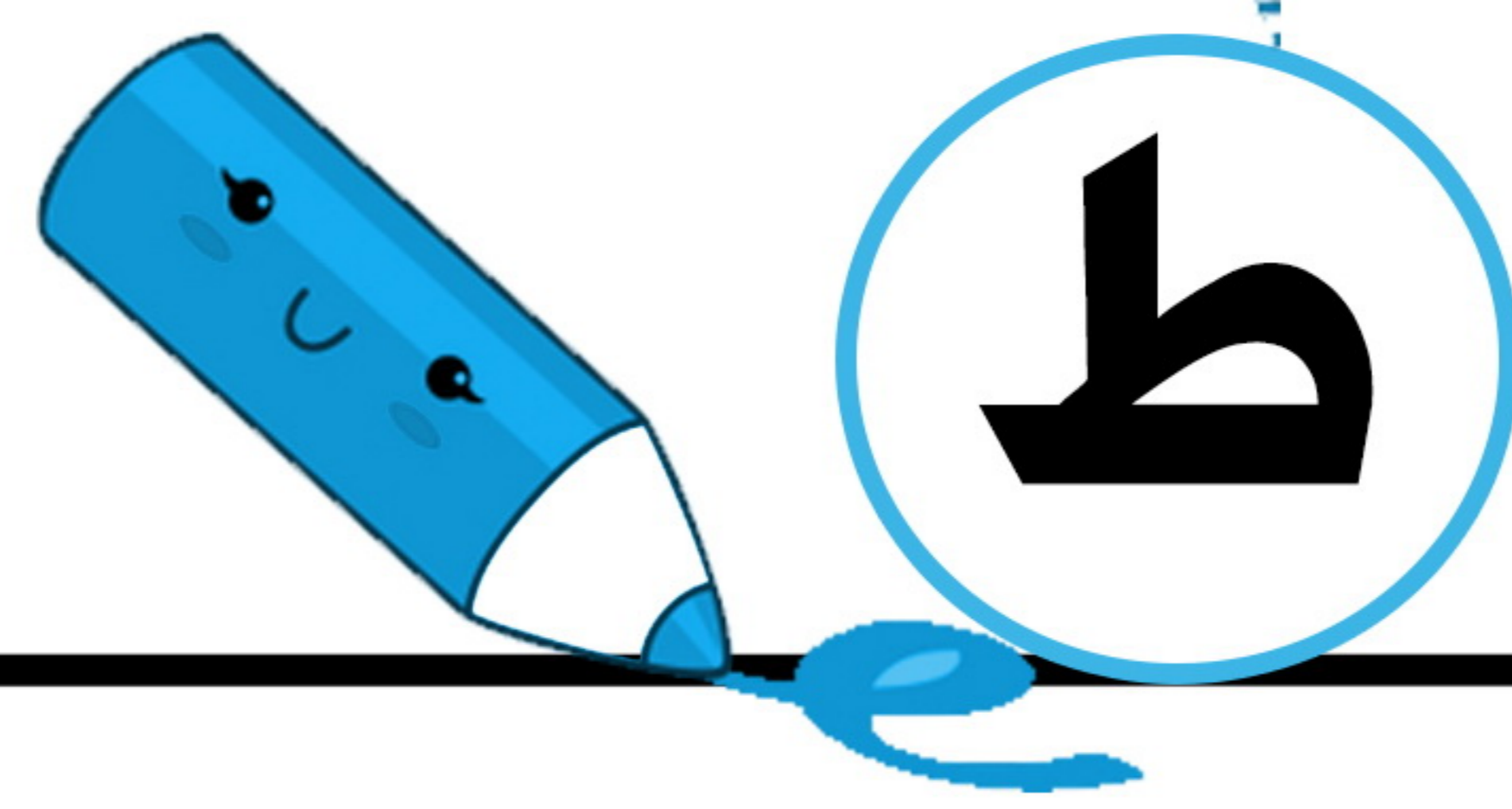




# ألوان حروف



A large rectangular area containing a complex pattern of overlapping circles and lines. The Arabic letters 'ح' (Ha) and 'ن' (Nun) are scattered throughout the pattern, serving as a visual search or coloring activity. The letters are in various orientations and sizes, some appearing as simple outlines and others as filled shapes.

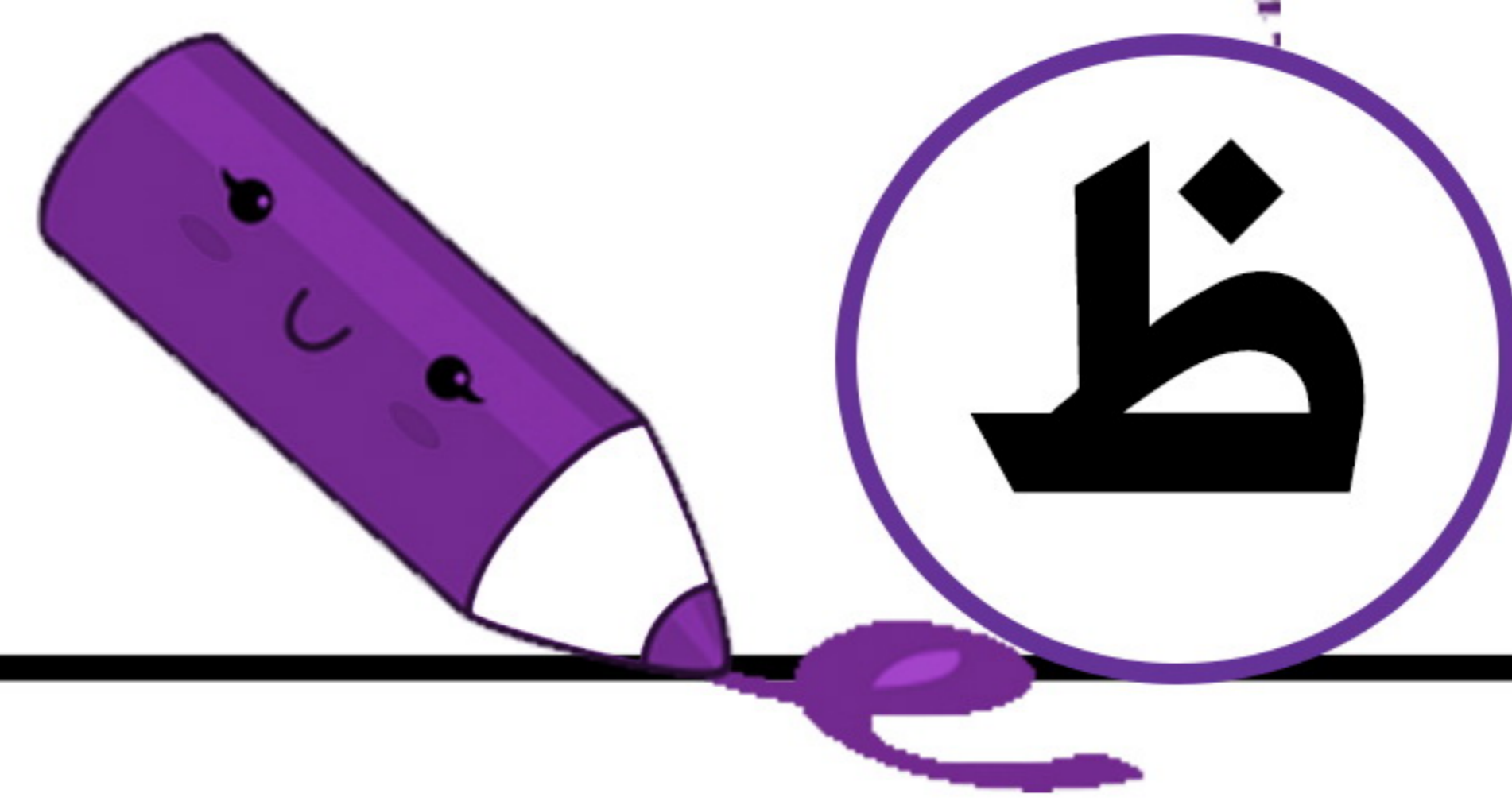


ط

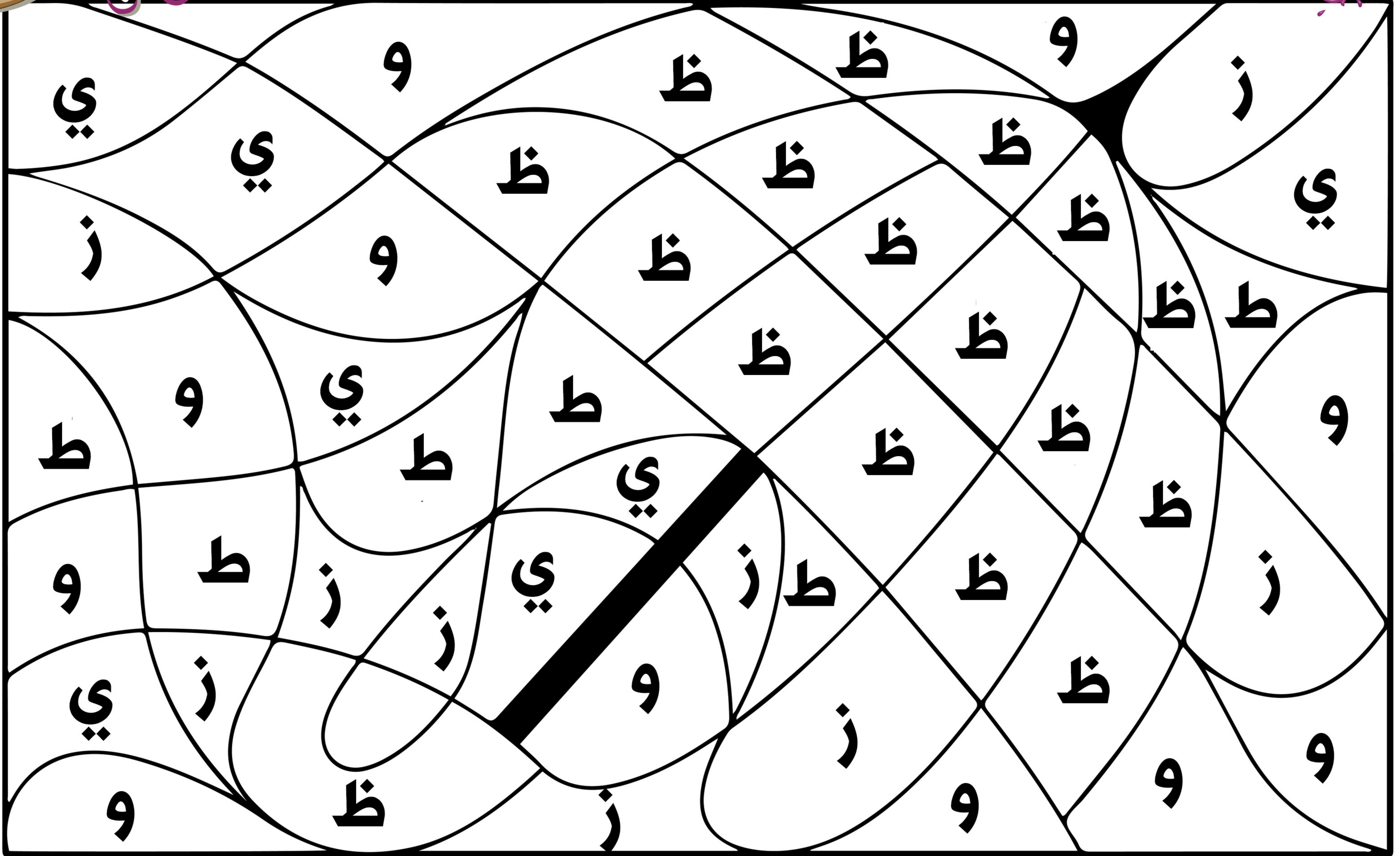
# ألوان حروف

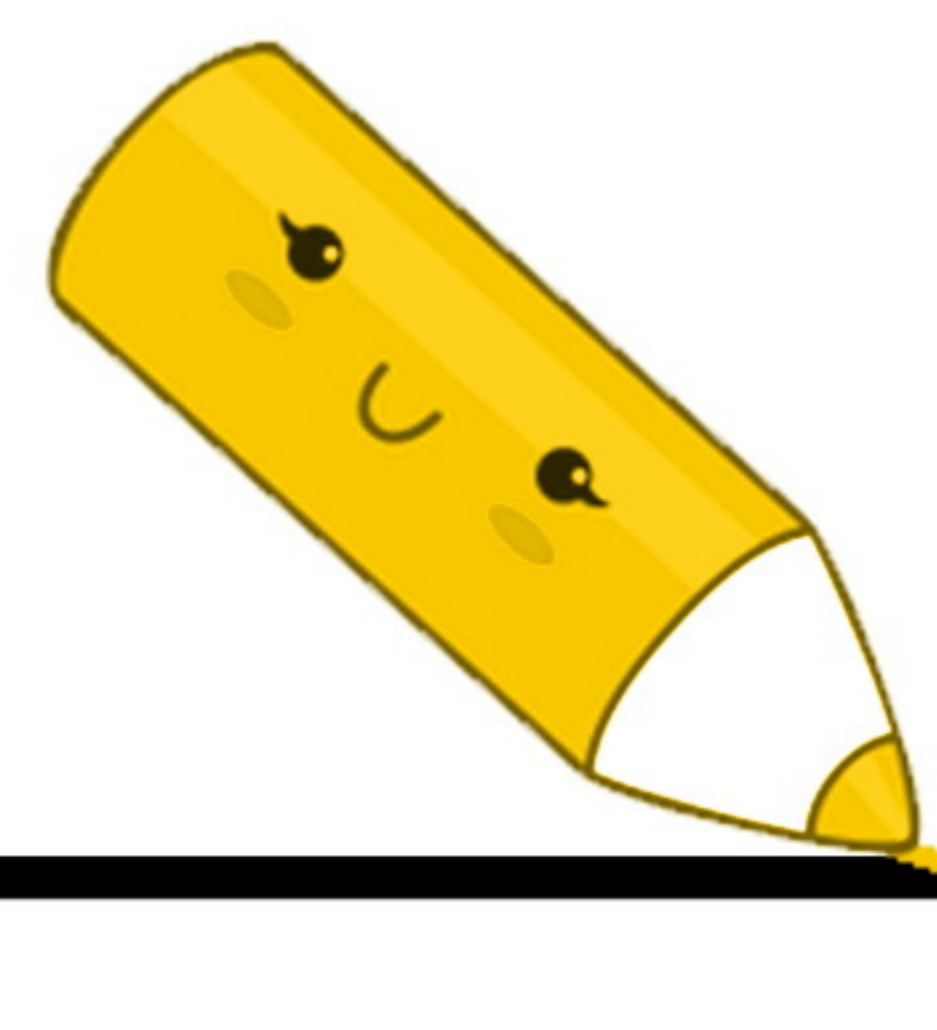
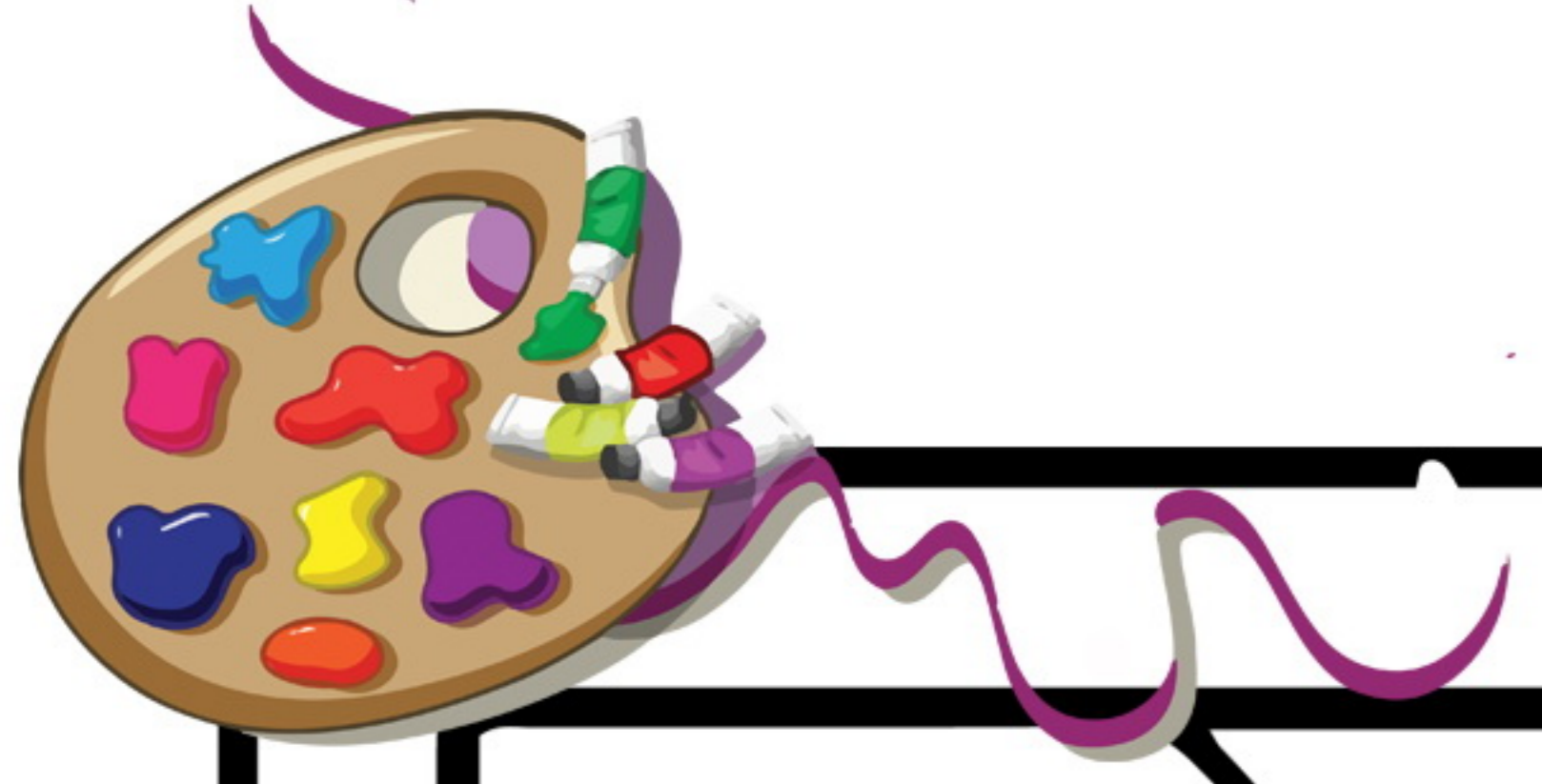


A large rectangular area containing a complex pattern of overlapping shapes. Each shape contains a single Arabic letter: 'ط', 'ف', 'ت', or 'ر'. The letters are scattered throughout the pattern, with some appearing in circles and others in various other shapes. The pattern is designed for a coloring or identification activity.



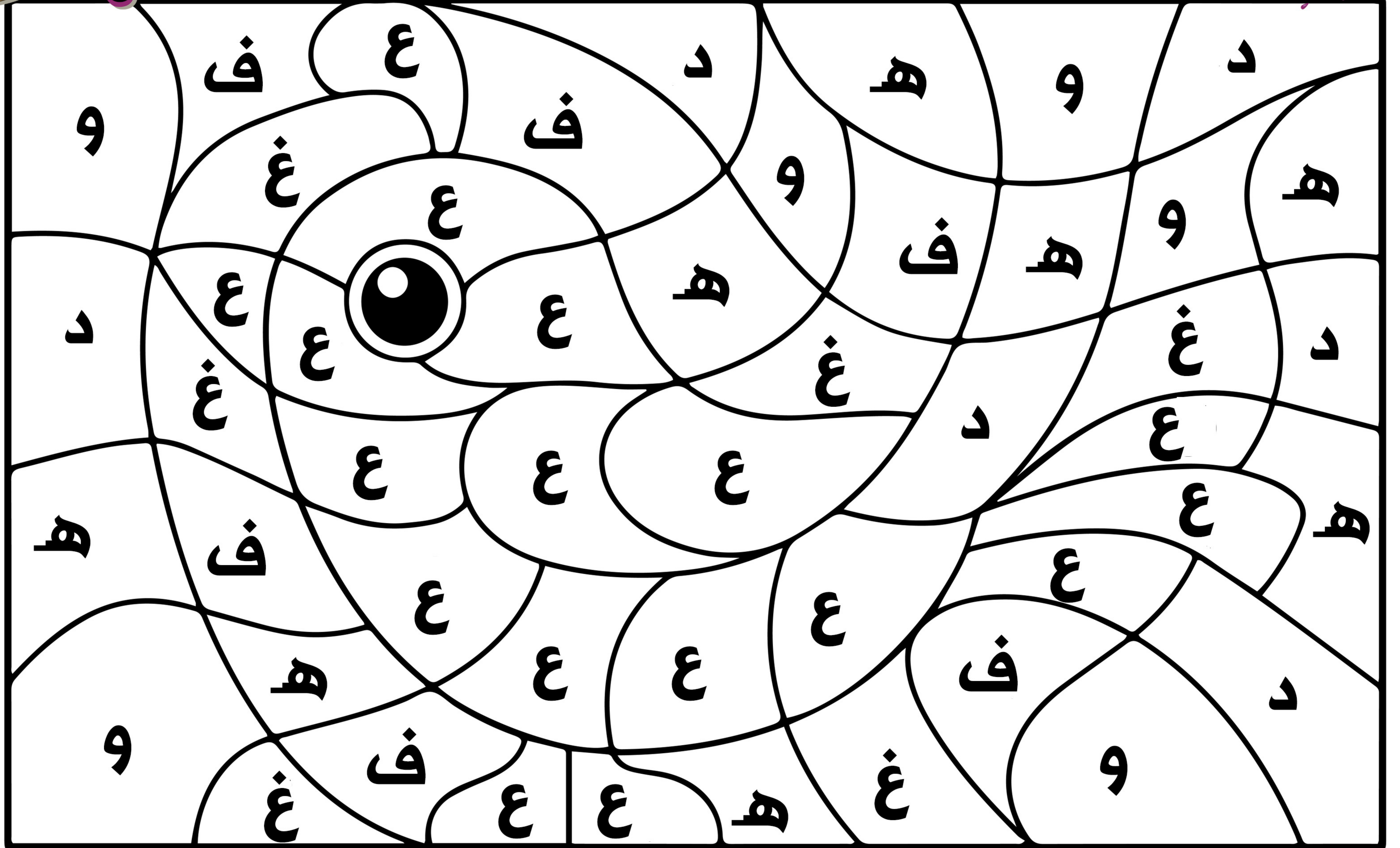
# ألوان حرف ظ





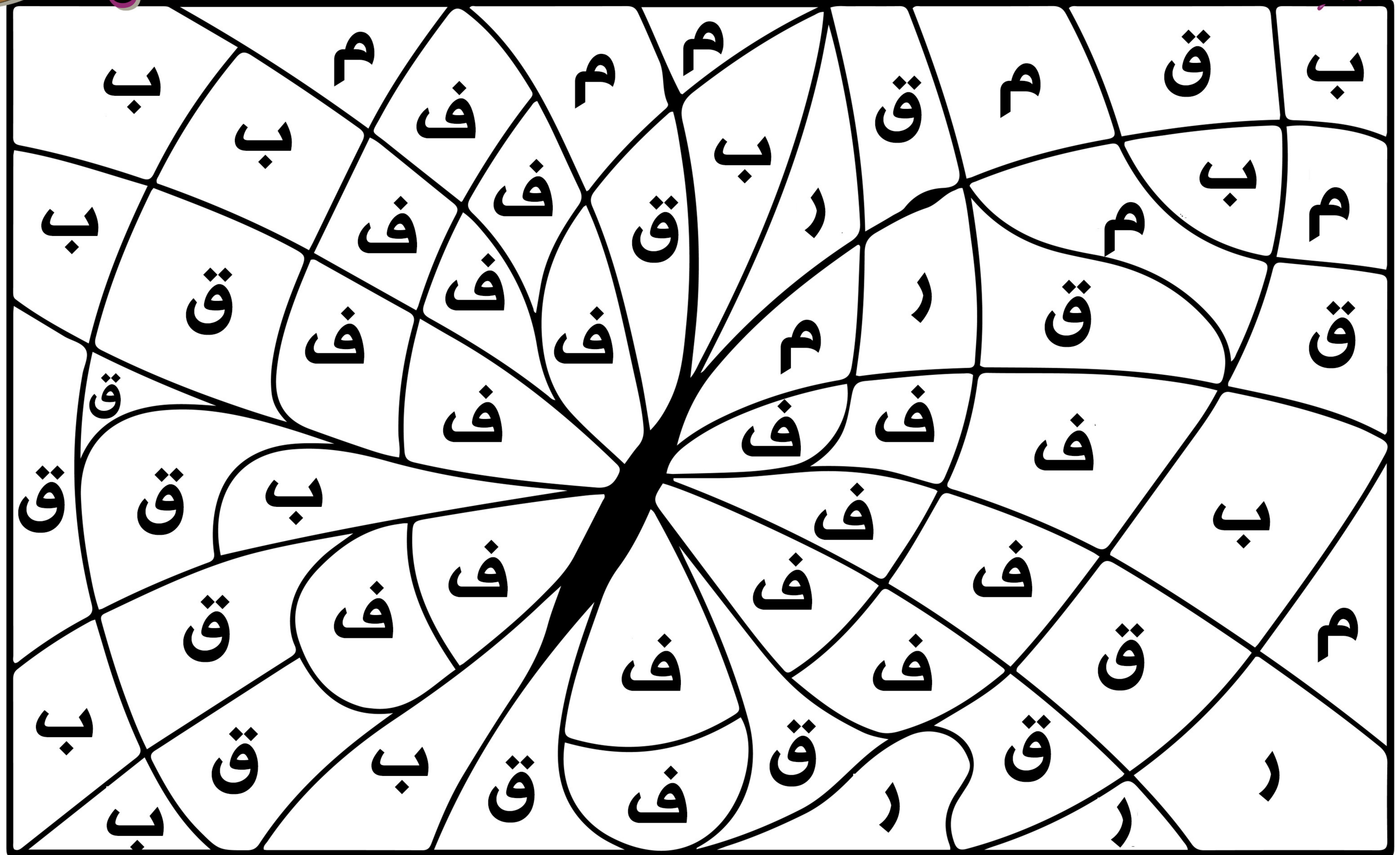
ع

ألوان حرف ع





# ألوان حرف ف



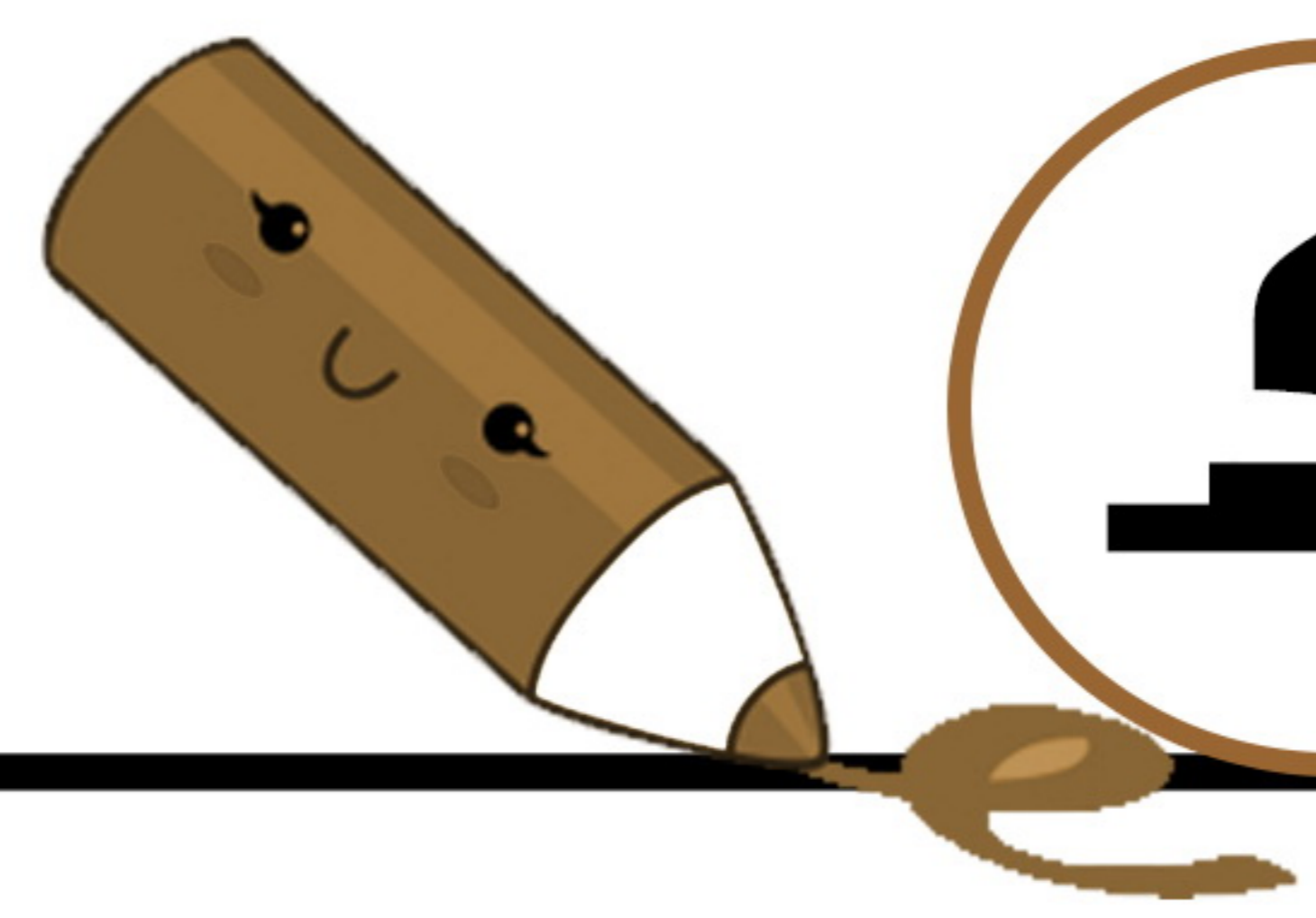


# ألوان حروف

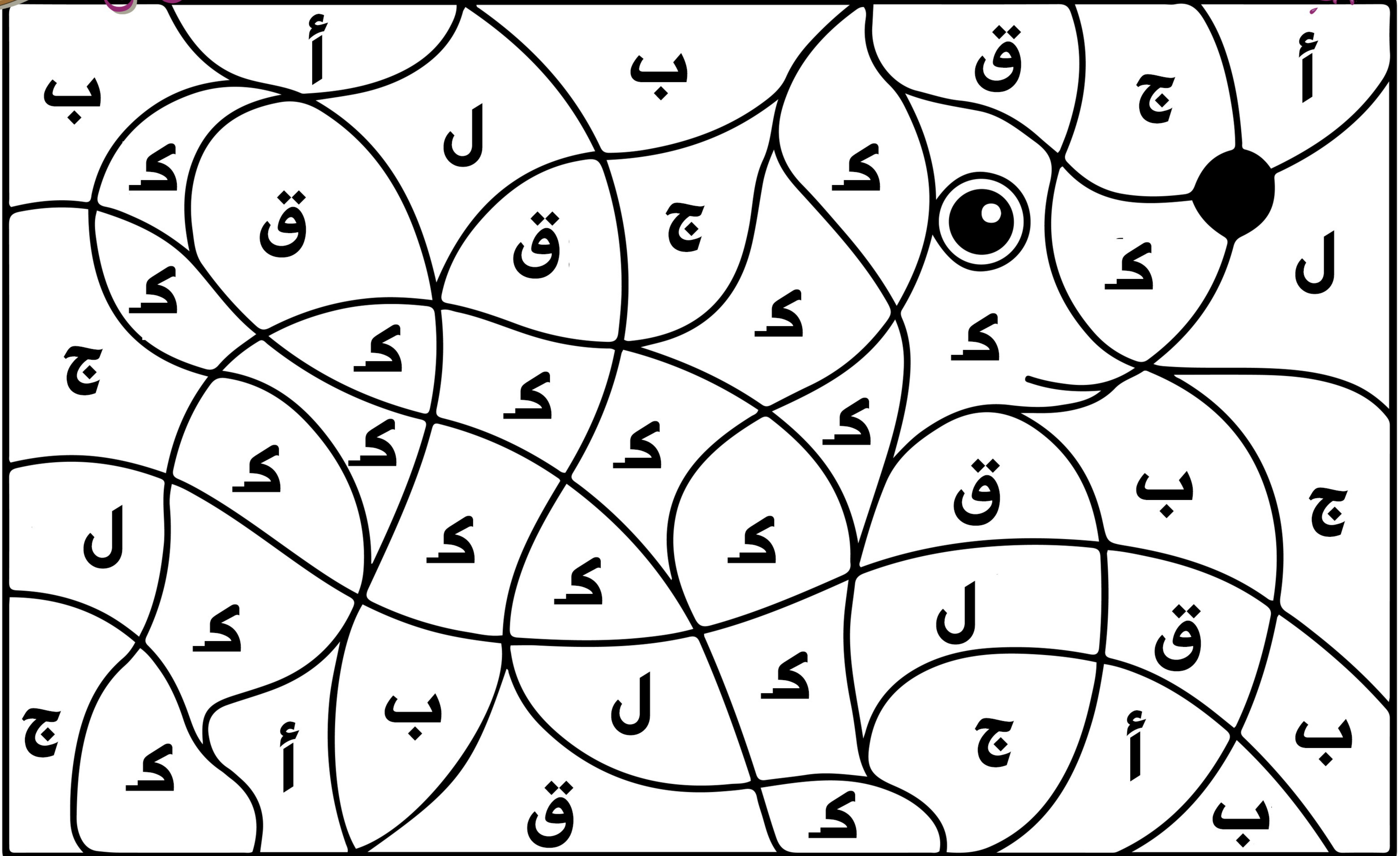


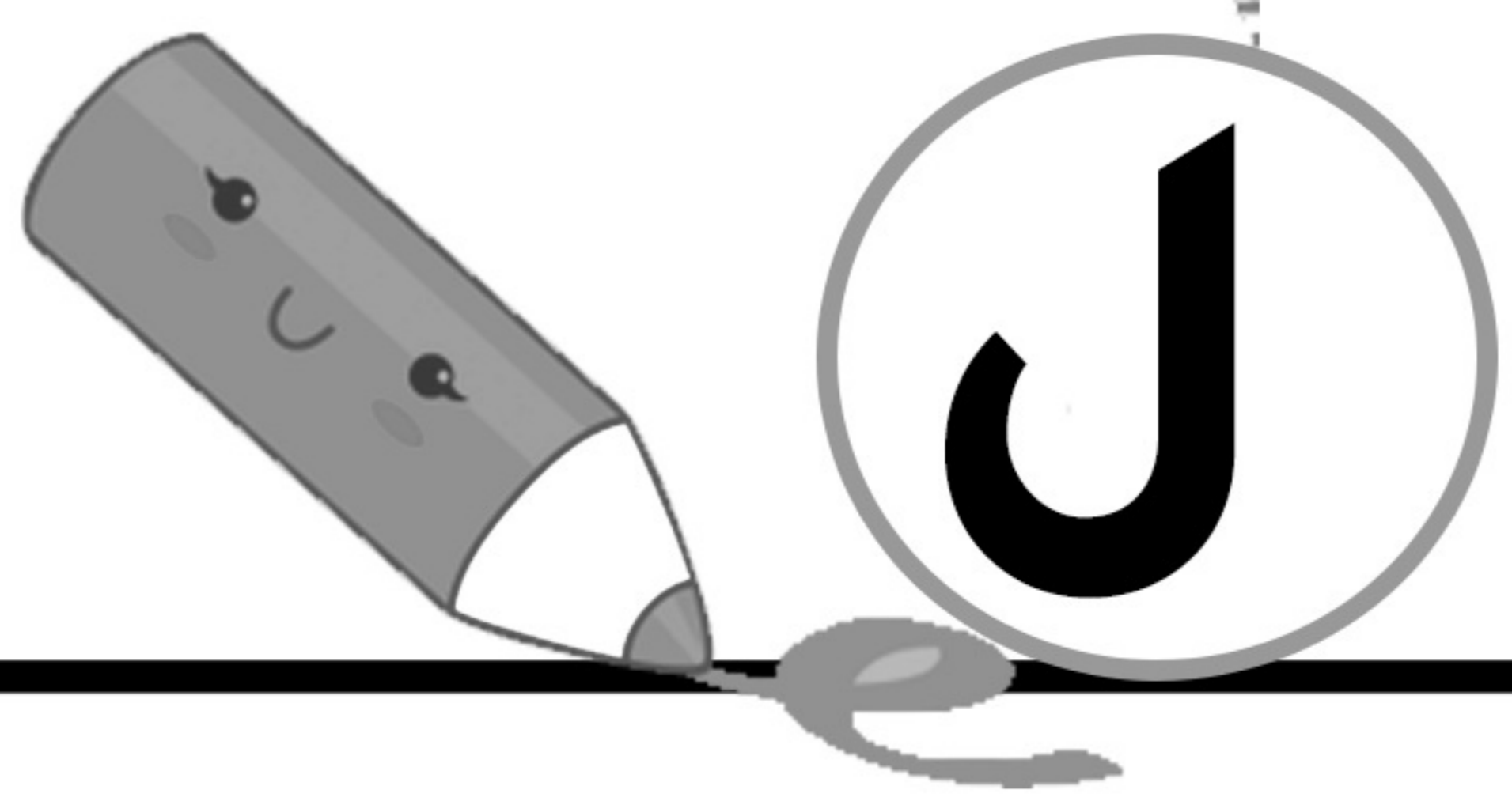
A large rectangular area containing a complex pattern of overlapping, irregular shapes. Each shape contains a single Arabic letter, either 'ق' (Qaf) or 'ف' (Fay). The letters are scattered throughout the pattern, creating a visual search or coloring activity.





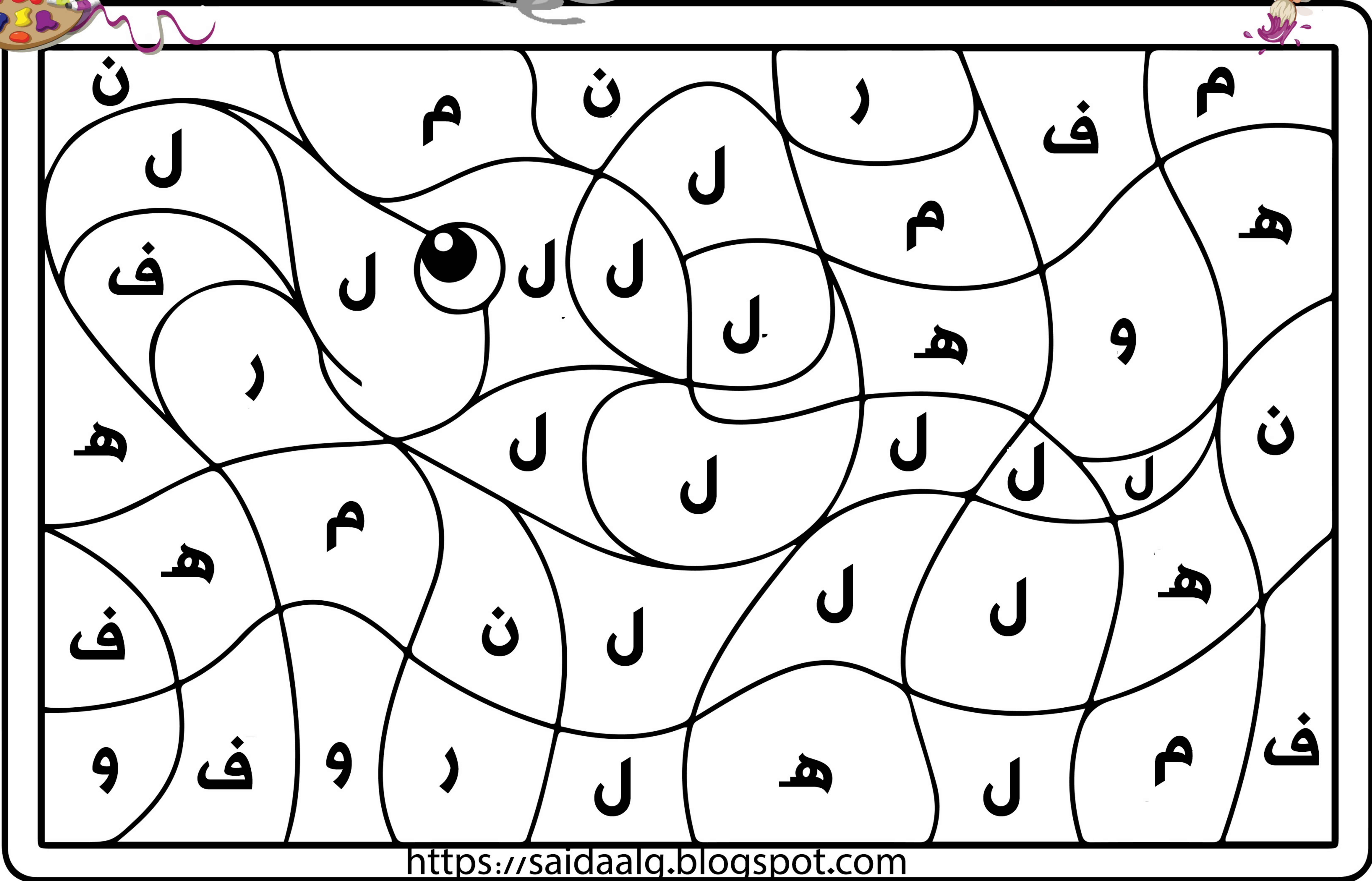
# ألون حرف

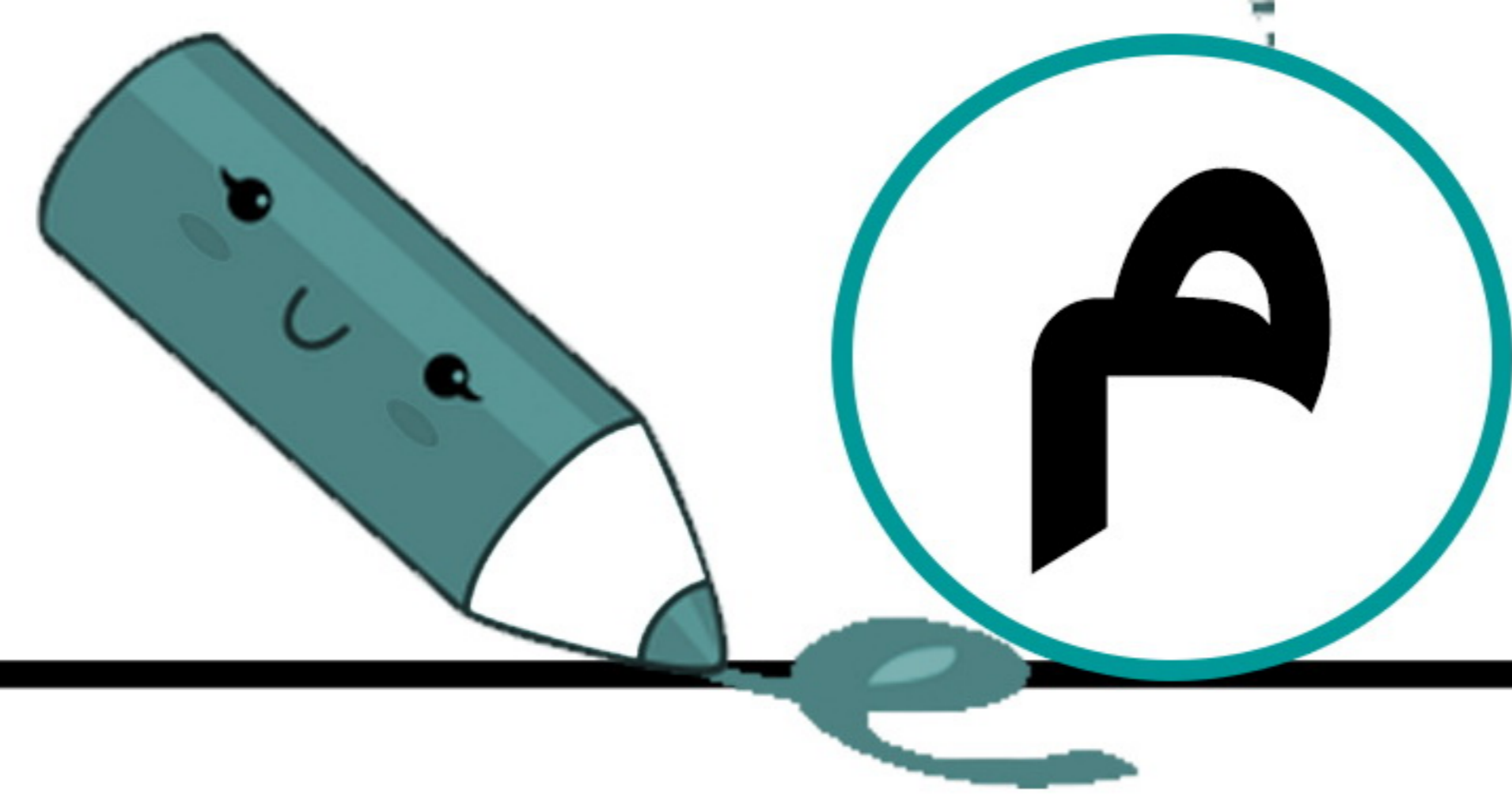




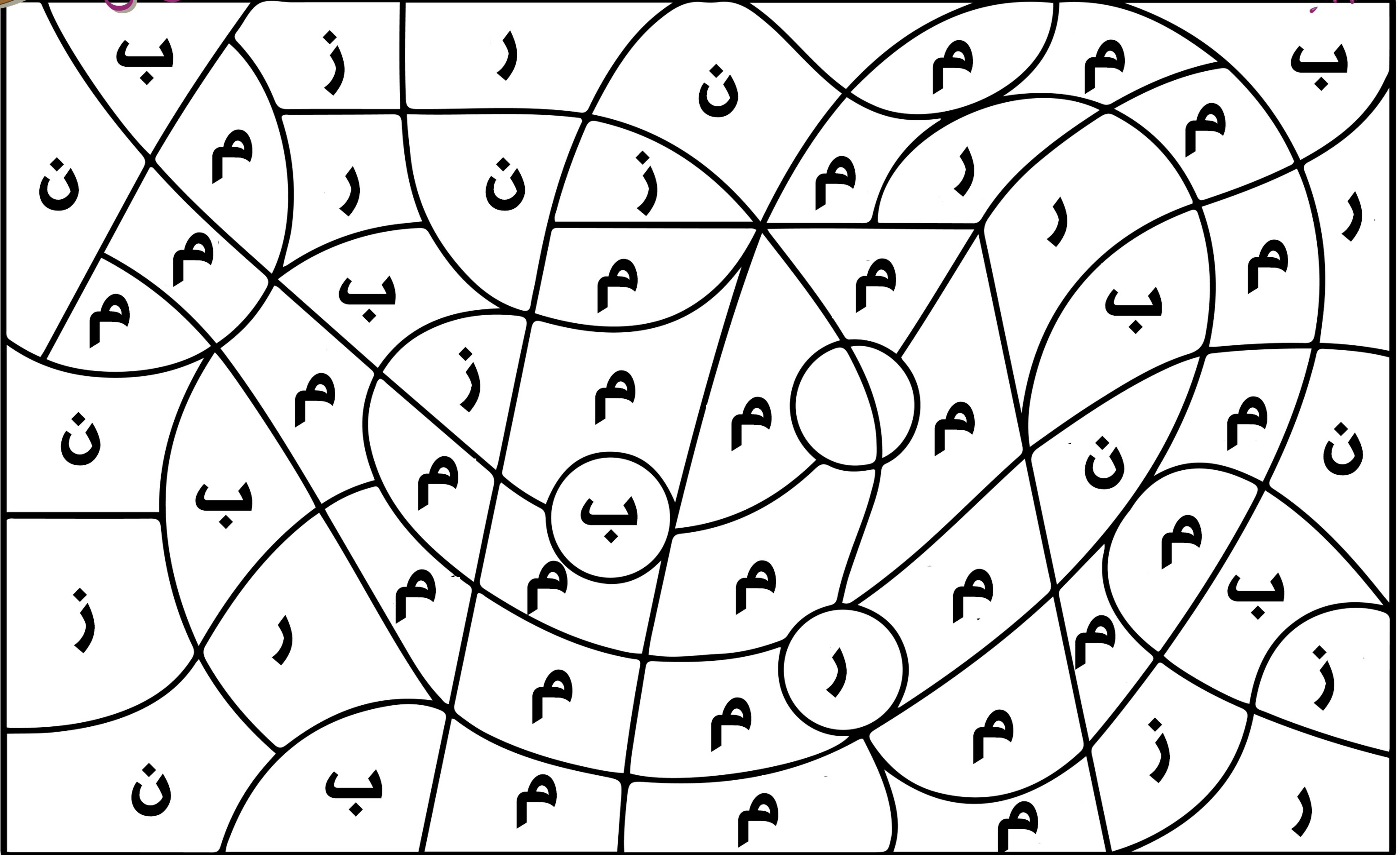
ن

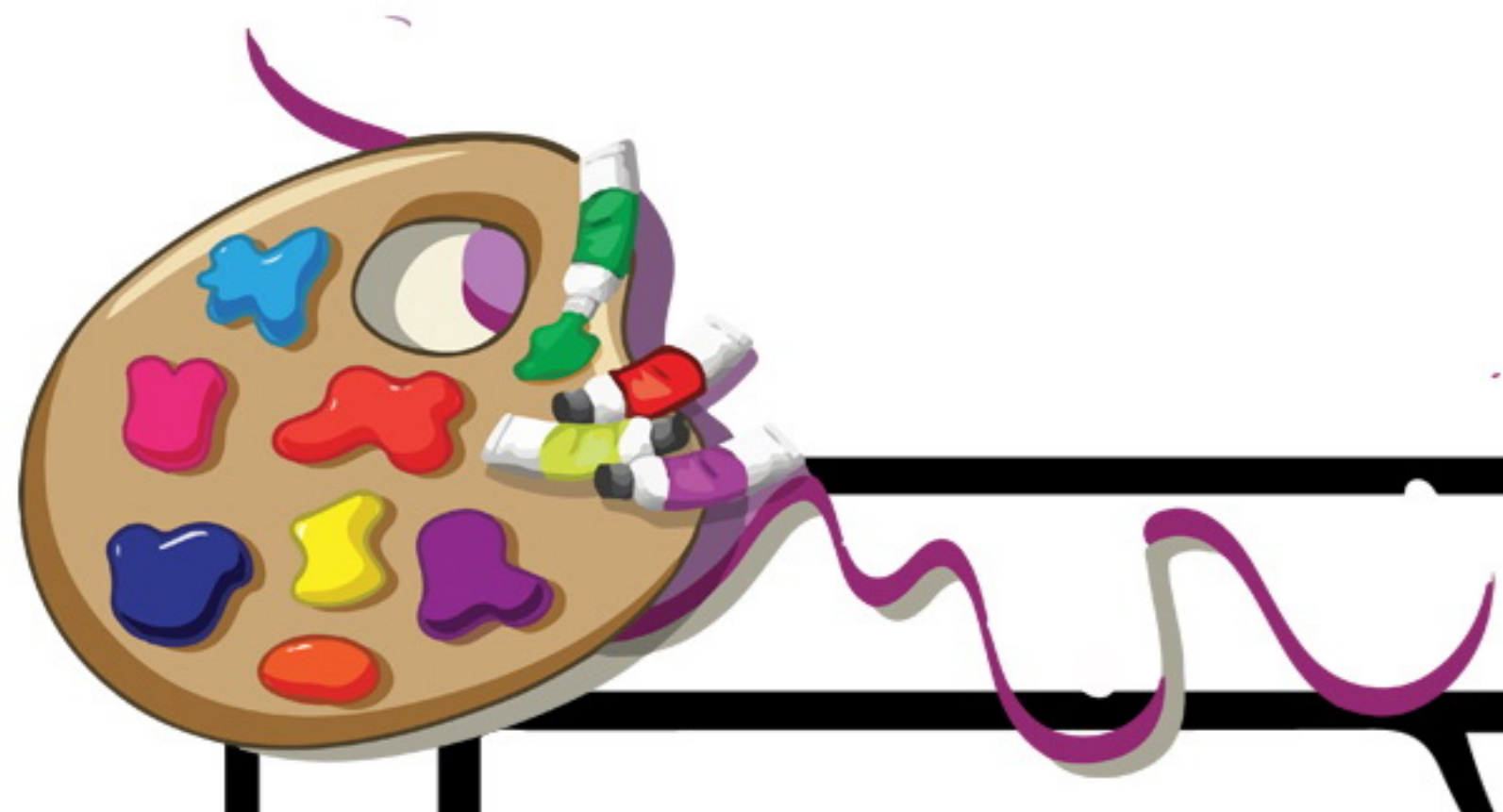
ألوان حروف



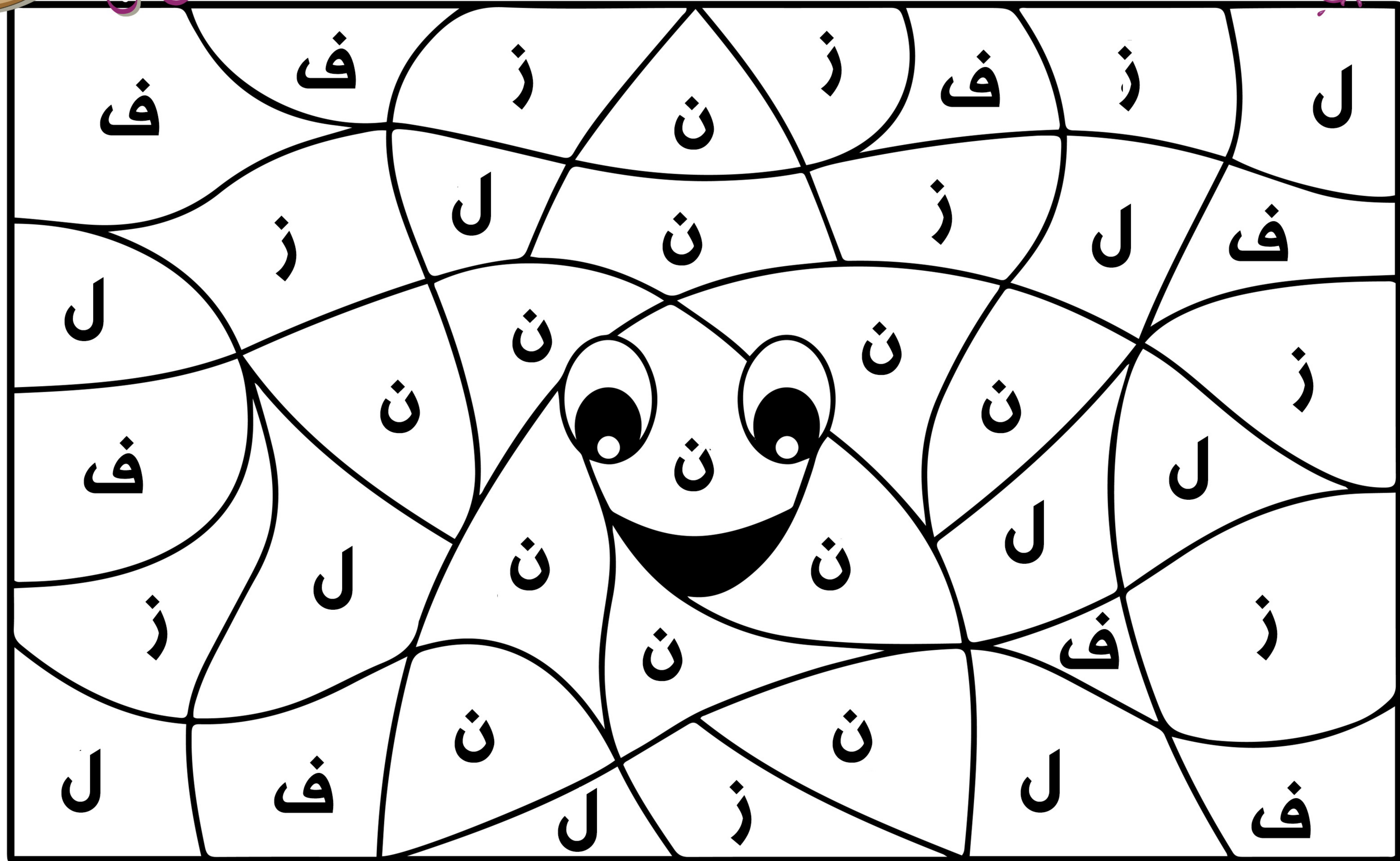


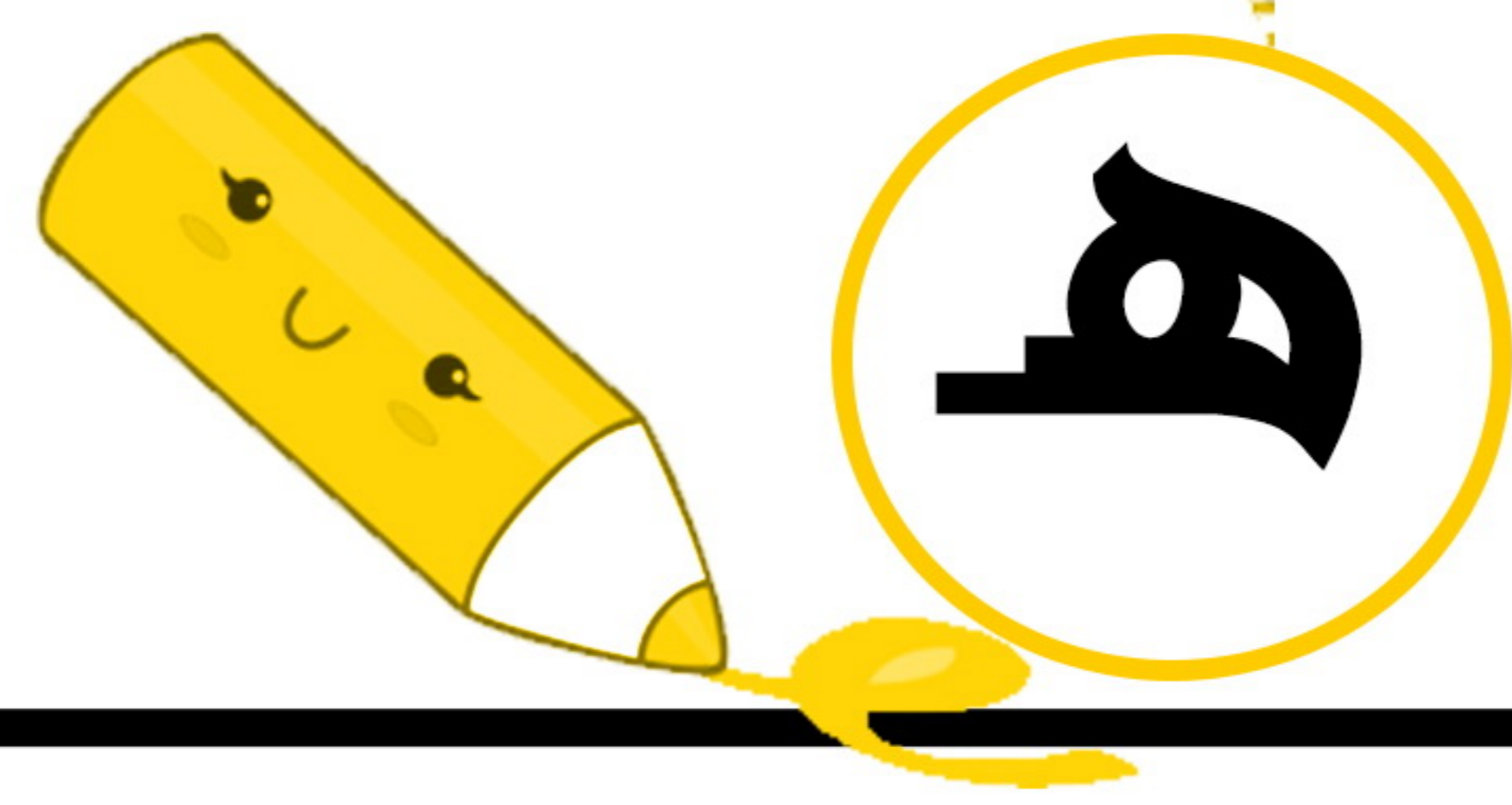
# ألوان حروف



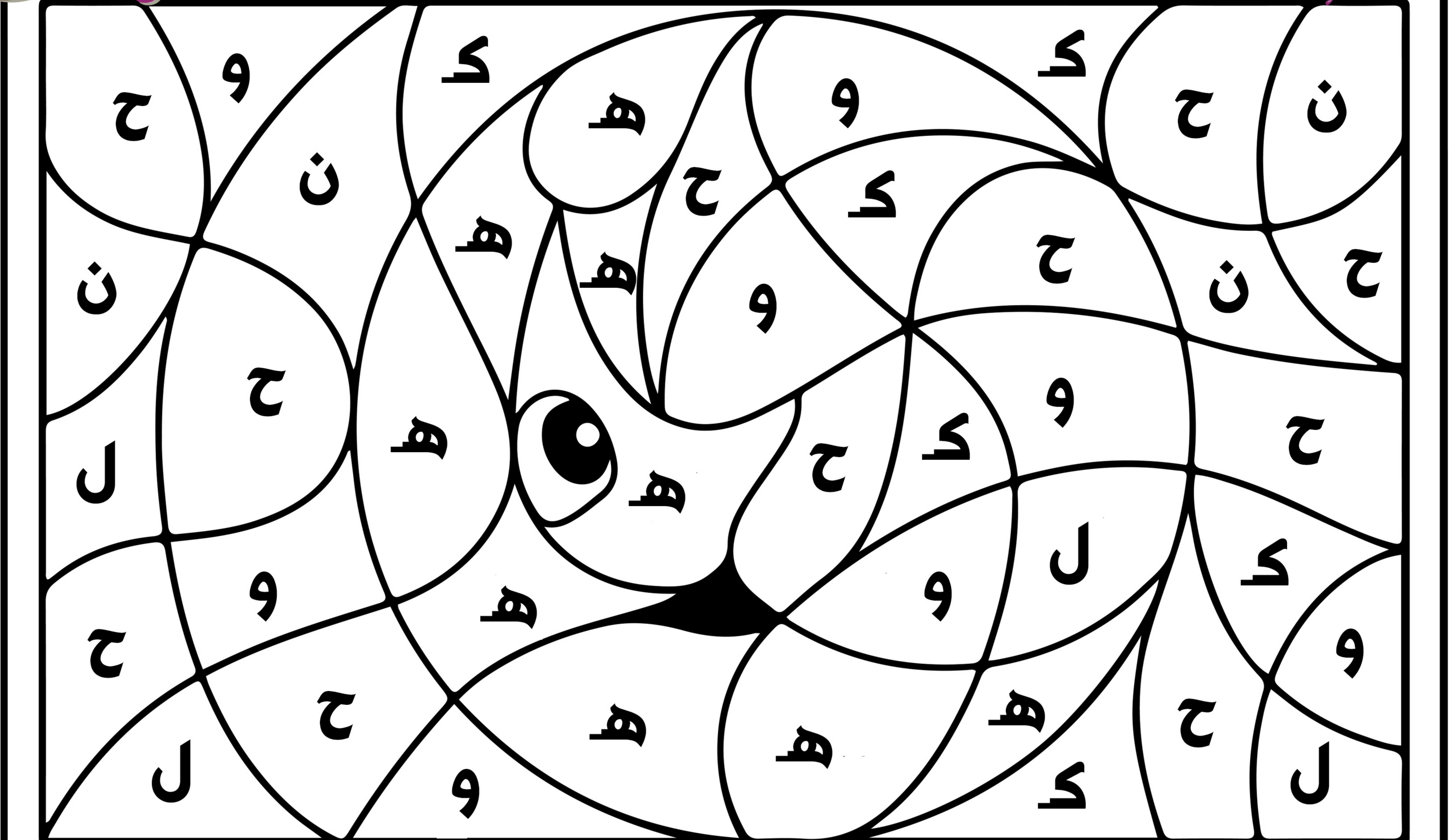


# ألون حرافف ن



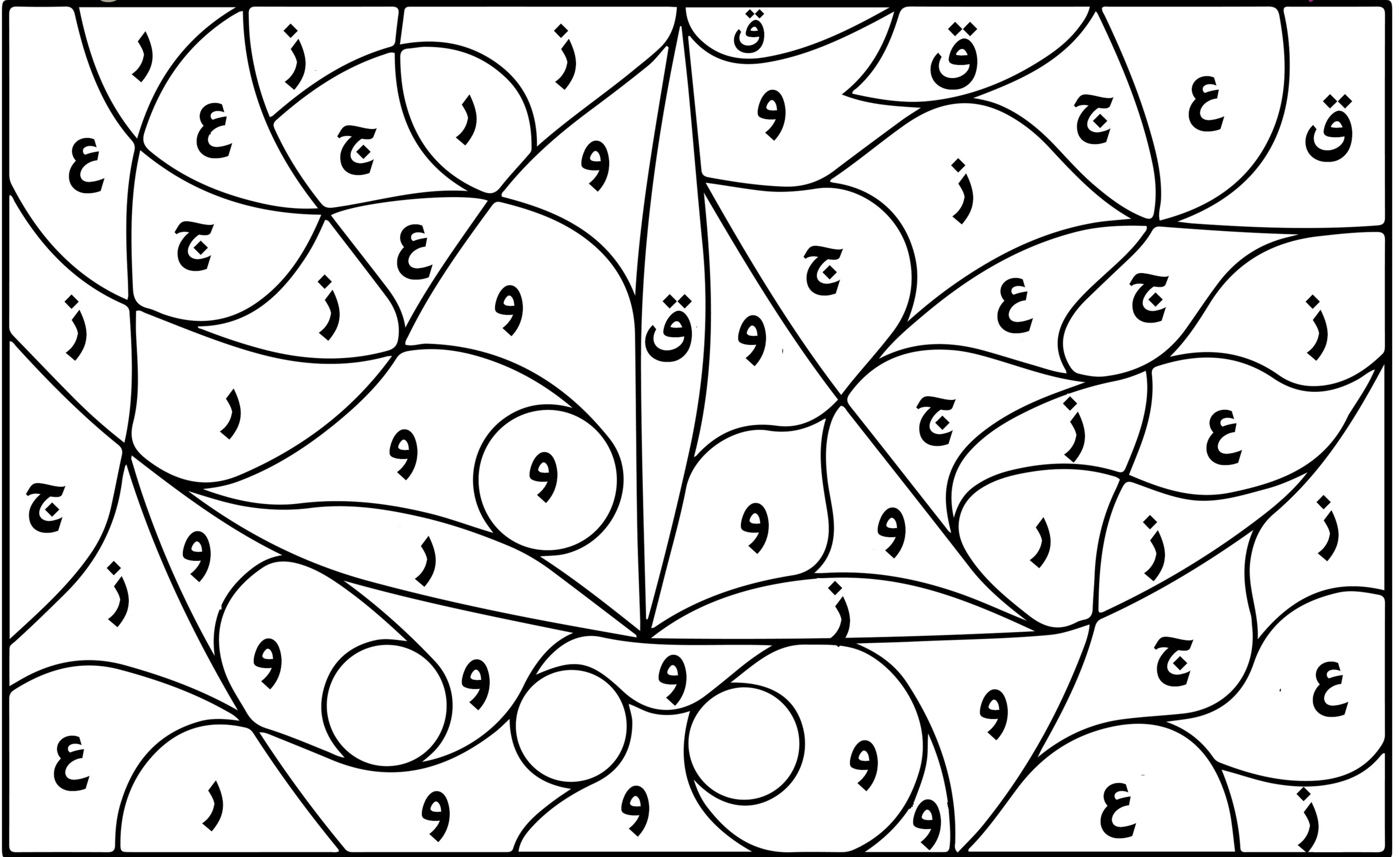


# الون حرف





# ألون حروف





# ألوان حروف

